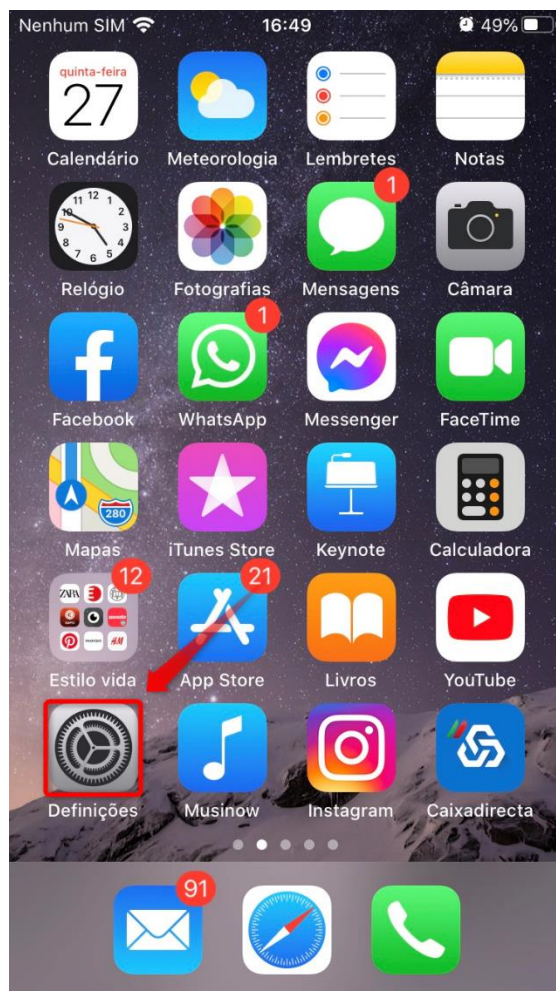


## Manual configuração email – Iphone

### Office365

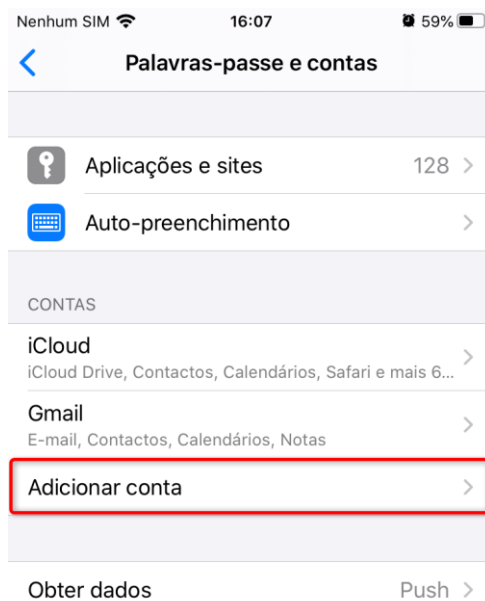
#### 1. Aceda a **Definições**



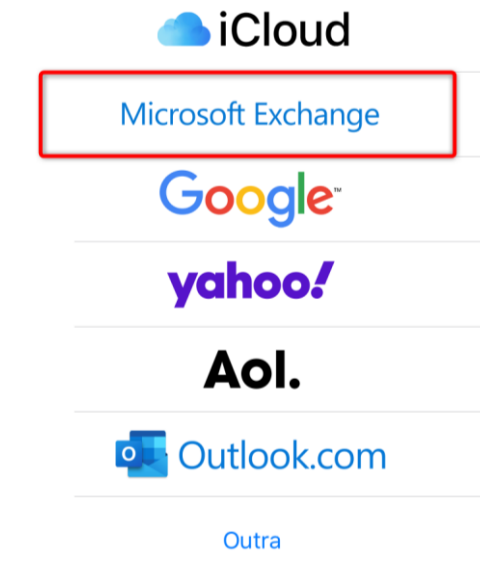
2. Carregue na opção **Palavras-passe e Contas**



3. Carregue em **adicionar conta**



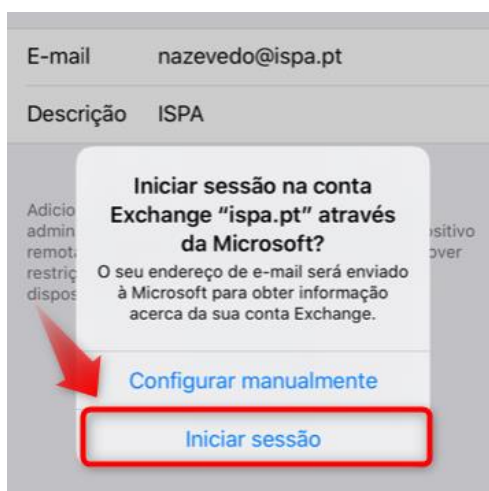
4. Selecionar opção **Microsoft Exchange**;



5. Insira o **email (1)** em seguida coloque a **designação** que pretende atribuir à conta (ex: **ISPA (2)**), por último faça **seguinte (3)**



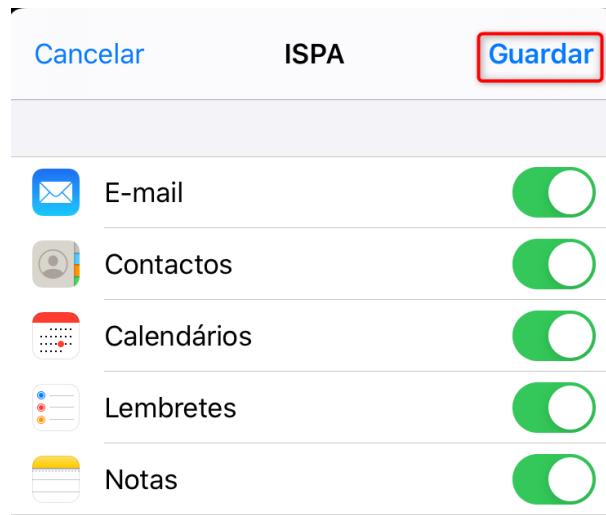
6. Selecione a opção **Iniciar sessão**.



7. Introduza a password do **email do ISPA (1)** e faça **iniciar a sessão (2)**;



8. Selecione as opções que pretende sincronizar, e carregue em **Guardar**



The screenshot shows a mobile application interface for configuring synchronization. At the top, there are three buttons: "Cancelar" (Cancel), "ISPA", and "Guardar" (Save). The "Guardar" button is highlighted with a red border. Below the buttons is a list of five synchronization options, each with a toggle switch:

Option	Toggle Status
E-mail	On
Contactos	On
Calendários	On
Lembretes	On
Notas	On

**Configuração concluída**